



# Stand Alone Access Control System

**soLogarde** a stand alone access control solution from TDSi provides both installer and user an access control system which is convenient and easy to set-up and operate. The control unit mounted on the secure side of the door is separate to the reader providing maximum security.

The system is based on the MIFARE® smart card technology allowing the card to be used not only for access control purposes but also in other applications such as library, cashless vending and POS offering the user a truly one-card solution.

**soLogarde** is programmed through the use of card packs that are available in various denominations. However unlike offerings from other access control manufacturers a simple hand-held programming tool negates the need for shadow cards to be retained, making administration and management of the system simplicity in itself.



## soLogarde in Detail

### Features & Benefits

- MIFARE smart card technology base offers markedly increased security over normal proximity methods
- Card programming through the reader provides an easy method of quickly putting the system into service
- Innovative hand-held programmer for deletion of cards removes the need to manage and control shadow cards
  - offers the user and installer a wide range of additional functions increasing system flexibility
- DDA user group automatically applies extended lock time to selected users ensuring compliance with the DDA.
- Time group feature provides a means of applying simple schedules to users.
- Diagnostic tools and visual indication provides valuable assistance to the system administrator in the event of faults minimising down-time.
- Output can be used to activate external devices in the event of an alarm condition occurring providing clear visual or audible alerts.
- Flash upgradeable firmware – keeps the controller up-to-date with the latest product improvements.
- Egress and second reader input provides the user with exit options – use an exit button or a **soLogarde** reader.
- Simple mounting into a standard MK style electrical back-box – no special enclosure required.
- Spring-loaded terminal blocks mean quick and simple connection of cabling to the controller thereby reducing installation time and cost.
- Available as a convenient starter kit including controller, reader and card pack.
- Use the controller to set or unset an intruder alarm system on presentation of a card.
- Unlock and relock a door on presentation of a card. Ideal for lecture theatres, meeting rooms etc.

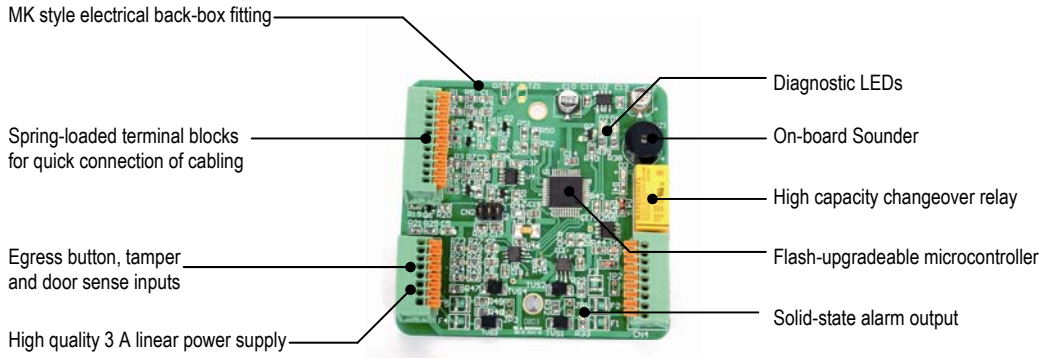
soLogarde



w: [www.tdsi.co.uk](http://www.tdsi.co.uk)  
e: [sales@tdsi.co.uk](mailto:sales@tdsi.co.uk)  
t: +44 (0)1202 723535



# Stand Alone Access Control System



## Technical Data

<b>Dimensions</b>	Controller: 180 x 180 x 18 mm Reader: n x 42 x 17 mm Programmer: 60 x 145 x 27
<b>Weight</b>	Controller: 5 g Reader: 30 g Programmer: 15 g
<b>Operating Environment</b>	-20°C to +60°C, 0 to 95%RH (non-condensing)
<b>Power Supply</b>	10 to 14 VDC @ 100 mA maximum
<b>Capacity</b>	1,000 cards
<b>Readers</b>	1 or 2 TDSi <b>SOLOGARDE</b> readers
<b>Doors</b>	1
<b>Inputs</b>	Inputs for egress button, door sense, tamper and clock timer for controlling the time group function.
<b>Outputs</b>	1 change-over relay for lock or other equipment (rated at 1A @ 30 VDC) 1 solid state alarm output for connection to external sounding or visual indication device
<b>Time groups</b>	2 (users can be members of either or both time groups). Function requires connection of a suitable clock timer
<b>Anti-passback</b>	No
<b>Mantrap function</b>	No
<b>Communications</b>	RS-485 for programmer connection

## Ordering Information

Part Number:	Description:
5002-4000	<b>SOLOGARDE</b> Access Control Unit
5002-4001	<b>SOLOGARDE</b> Hand Held Programmer
5002-4002	<b>SOLOGARDE</b> Starter Kit—Includes Controller, Reader and 10 Card Pack
5002-3020	<b>SOLOGARDE</b> 10 Card Pack
5002-3021	<b>SOLOGARDE</b> 25 Card Pack
5002-3022	<b>SOLOGARDE</b> 50 Card Pack

